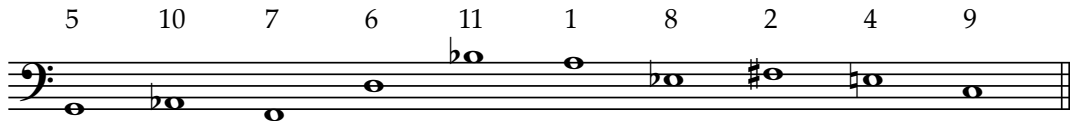


How Fast Can You Play?



1. Play single notes as fast as possible with your hands in an atonal style and then add in the theme in long notes with the pedals.
2. Increase to trio texture. Both hands play independent atonal lines of fast notes. No rests allowed. Pedal plays them in long notes.
3. Duo: Right hand and pedal alone, but this time, play the theme in retrograde (C, E, F#, Eb...)
4. Duo (left hand and pedal) with the theme played from the outside in (G, C, Ab, E...)
5. Duo (both hands and pedal) with the theme from the inside out (A, Bb, Eb, D...)
6. Duo with the theme inverted (octave transposition permitted so as to not run out of notes) so it becomes: G, F#, A, C...
7. Repeat steps 2-6 but observe the numbers above the notes as the duration of the notes of the theme in terms of the short notes you play
8. Invert the texture: Start with fast notes above a slow moving theme. Slowly change to slow note theme in the hands above fast notes in the feet.